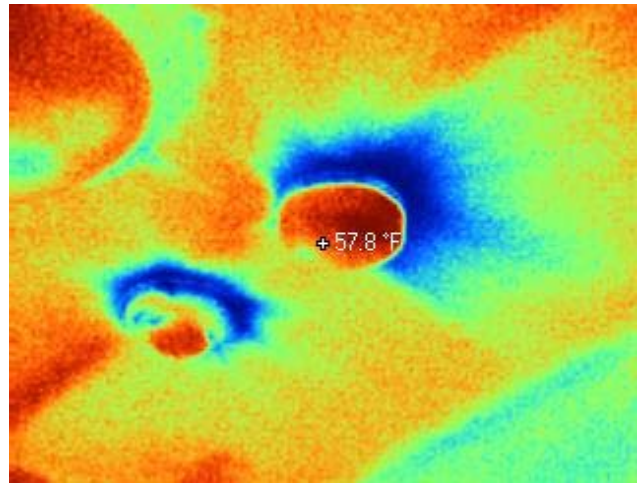
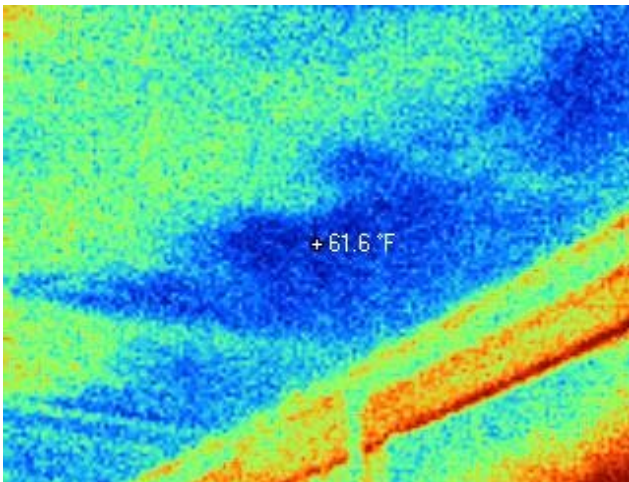


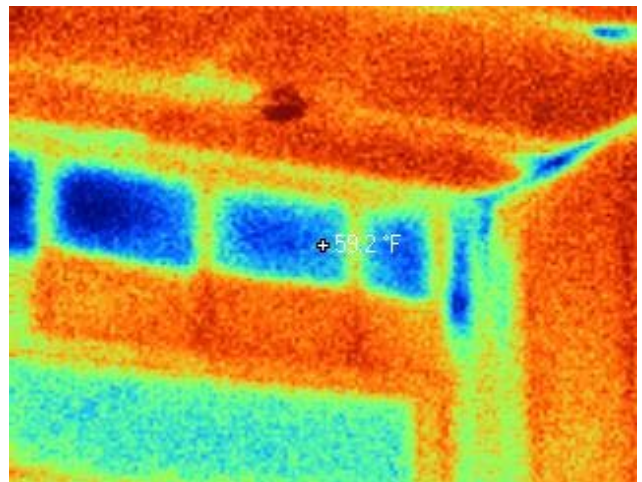
Missing insulation below framed floor



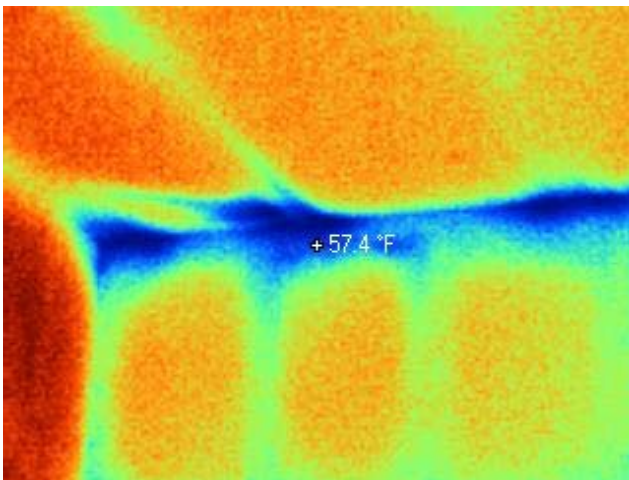
Air infiltration at ceiling penetrations



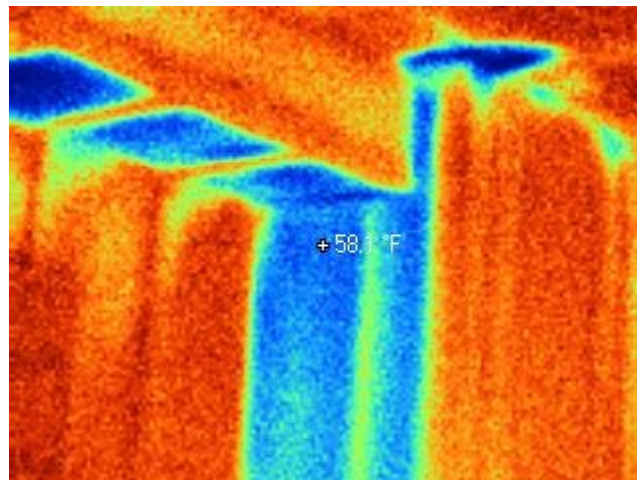
Missing insulation above ceiling



Air infiltration at wall cavities



Air infiltration at top plate



Air infiltration at wall and soffit cavities

**Note that blue is cool and red is warm, center point temperatures are as shown
Those noting "air infiltration" taken with blower door running.**